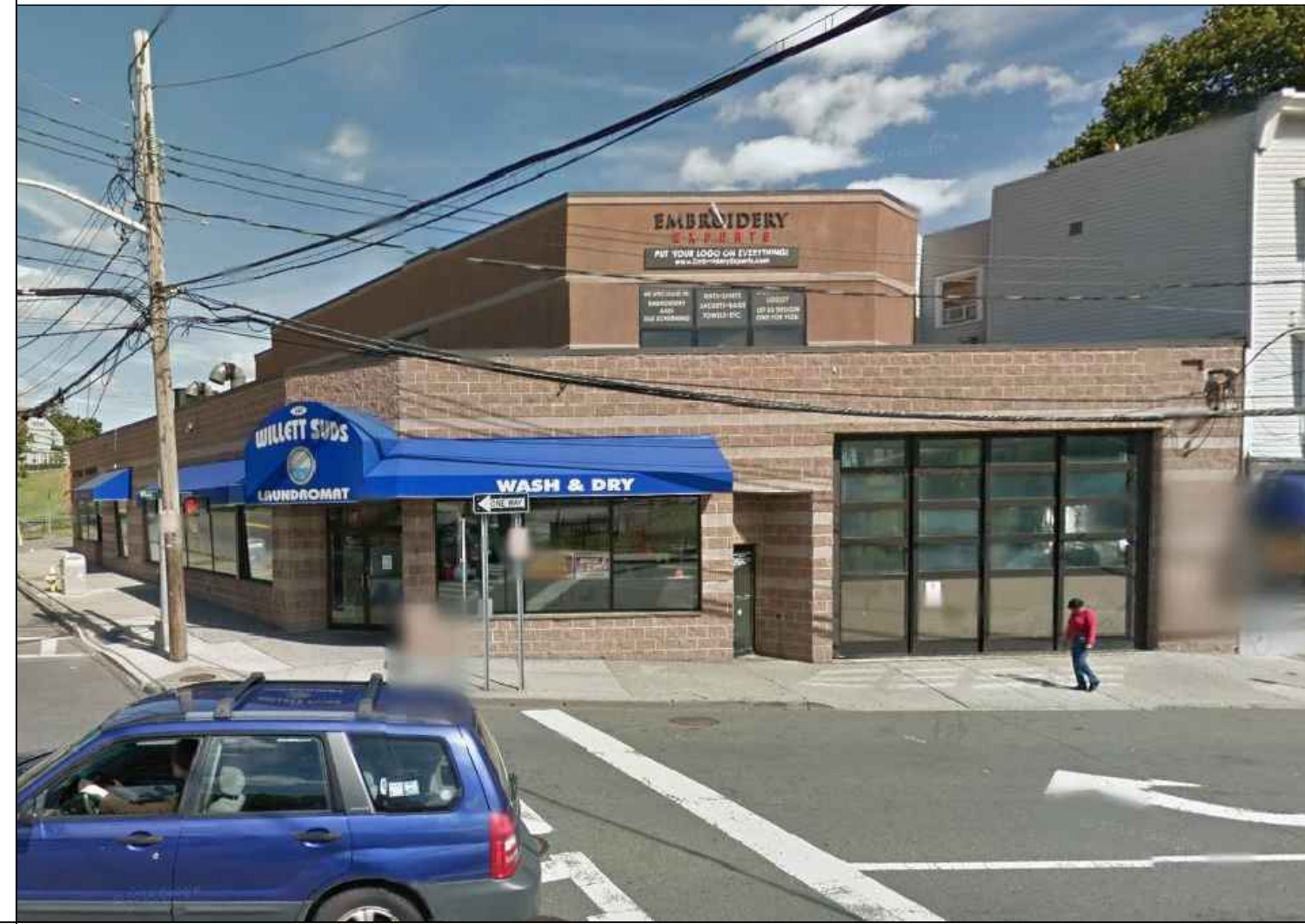
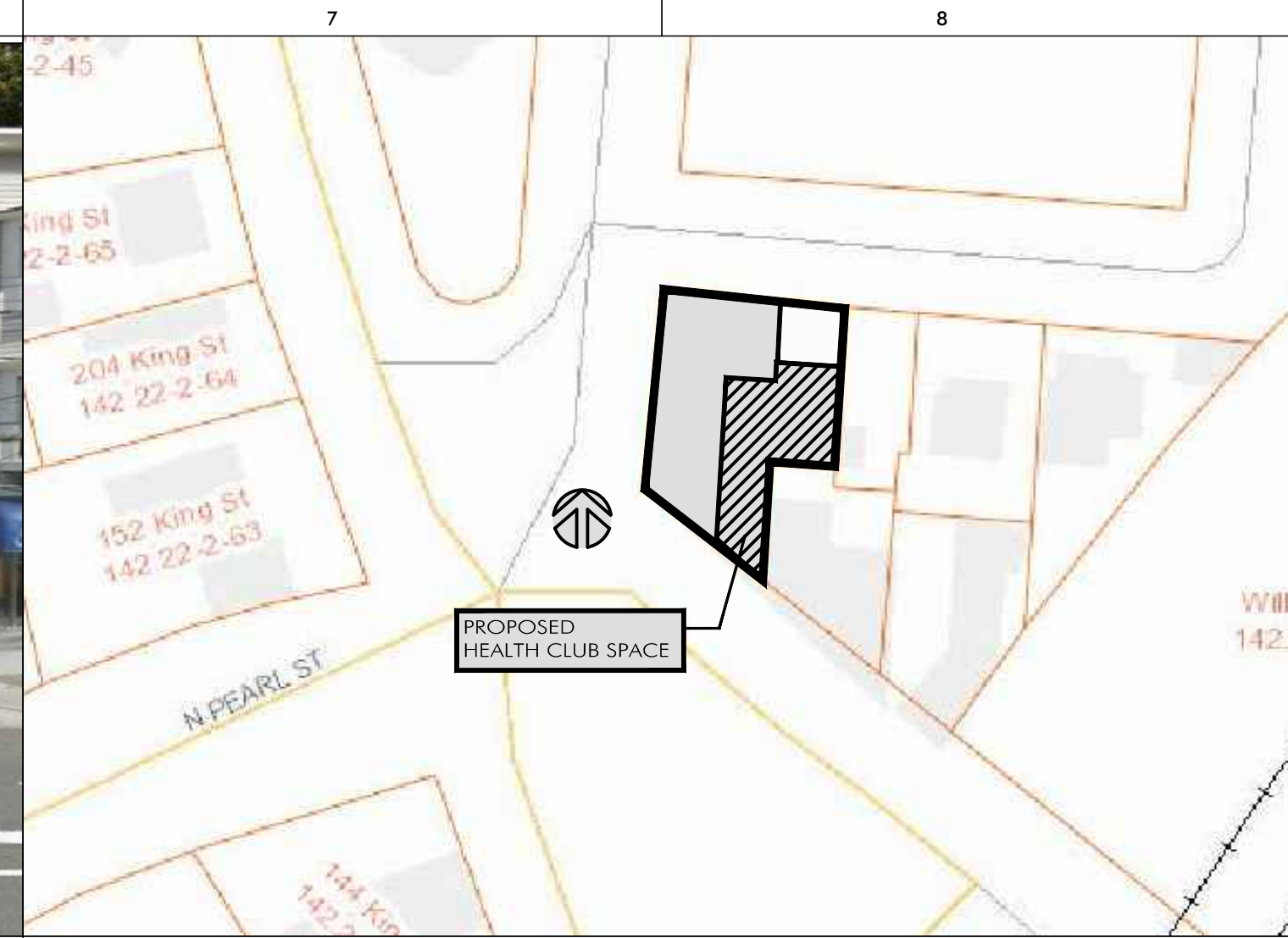




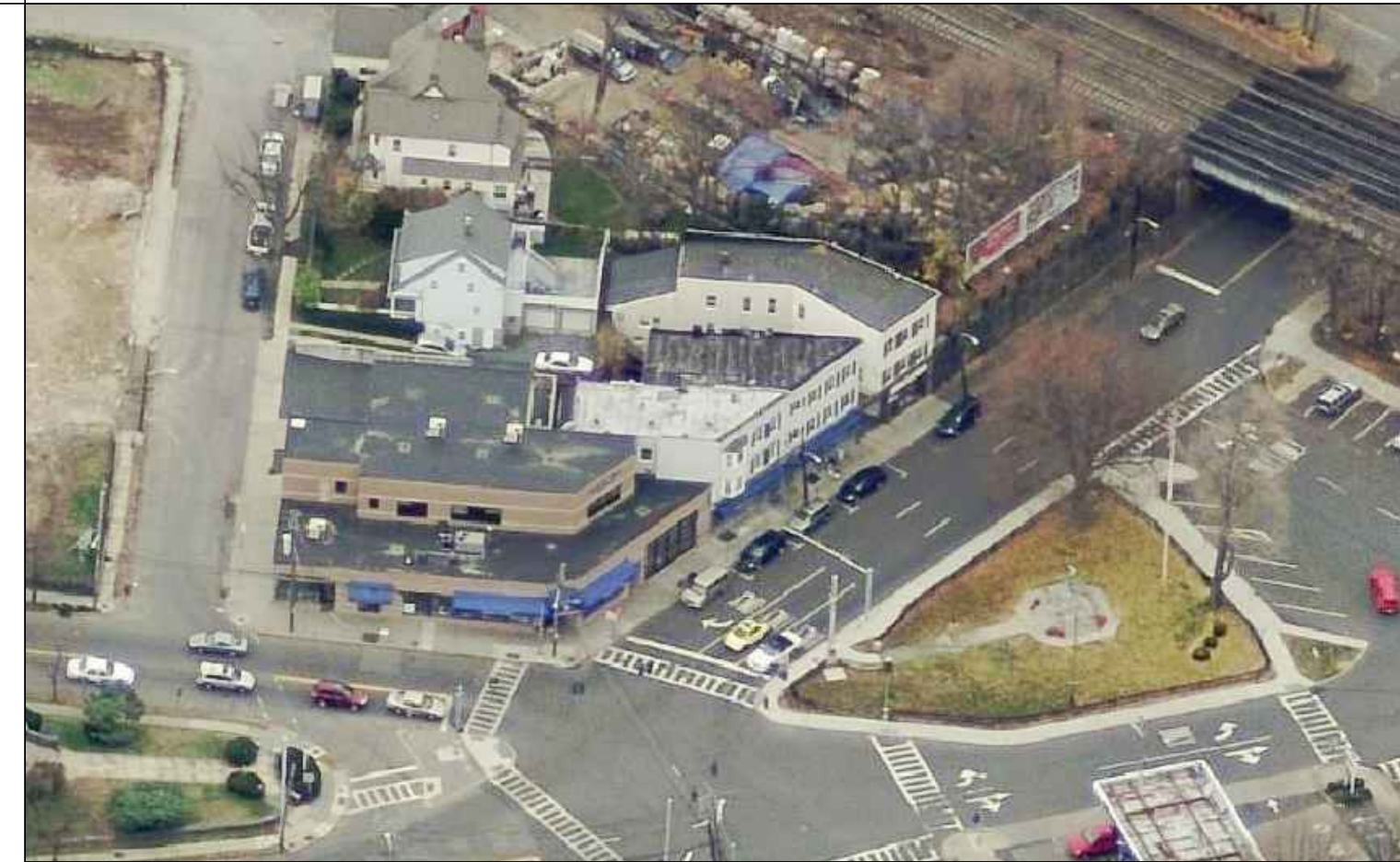
Photos
scale : NTS



Street View
scale : NTS



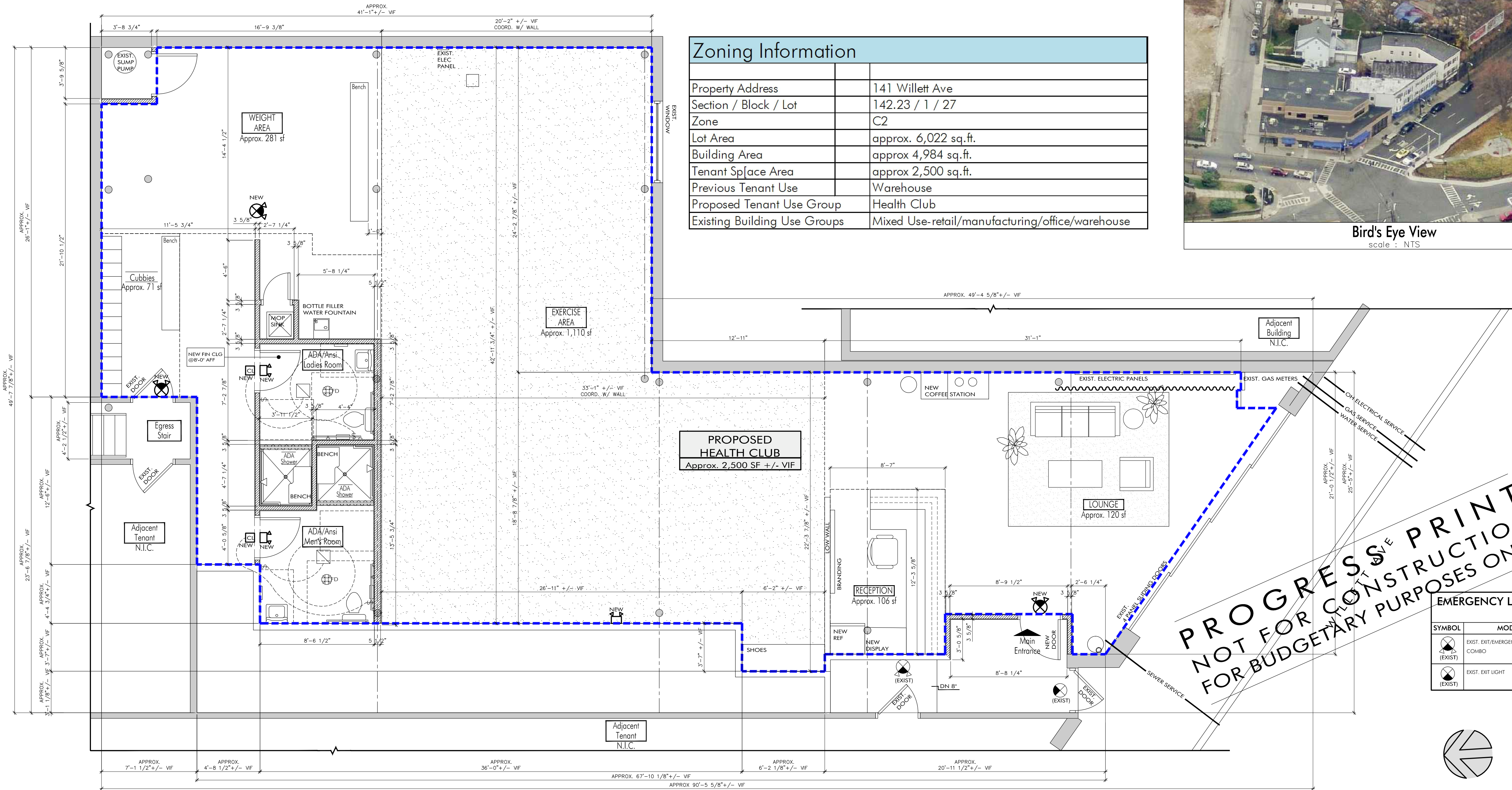
Key Plan
scale : NTS



Bird's Eye View
scale : NTS

Zoning Information

Property Address	141 Willett Ave
Section / Block / Lot	142.23 / 1 / 27
Zone	C2
Lot Area	approx. 6,022 sq.ft.
Building Area	approx 4,984 sq.ft.
Tenant Sp[ace] Area	approx 2,500 sq.ft.
Previous Tenant Use	Warehouse
Proposed Tenant Use Group	Health Club
Existing Building Use Groups	Mixed Use-retail/manufacturing/office/warehouse



Proposed Floor Plan
scale : 1/4" = 1'-0"

**PROGRESSIVE PRINT
NOT FOR CONSTRUCTION
FOR BUDGETARY PURPOSES ONLY**

EMERGENCY LIGHTING

SYMBOL	MODEL #
	EXIST. EXIT/EMERGENCY LIGHT COMBO (EXIST)
	EXIST. EXIT LIGHT (EXIST)

ECU Port Chester BJJ

Proposed Floor Plan

sarrazin architecture inc
21 NORTH MAIN STREET, Suite 209
FORT CHESTER NY 10573
Tel 914.584.8437 or 914.584.4331

PIERRE JACQUES SARRAZIN AIA
ARCHITECT

NOT VALID WITHOUT SEAL

141 Willett Ave.
Port Chester, NY
10573

1/4" = 1'-0"
project number: 15-562
issue date: 03-12-15

A-200
revision 02